

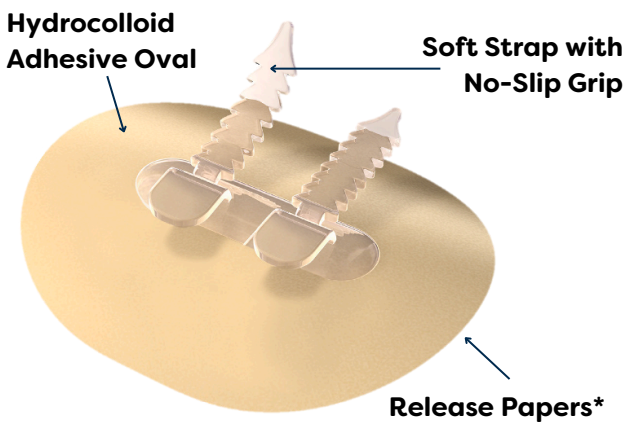
# Quick Reference Guide

## CathGrip® Application and Removal for Driveline Securement

### STEP 1: PREPARATION - CLEAN & PREP

#### CathGrip® Universal Securement Low Profile Device

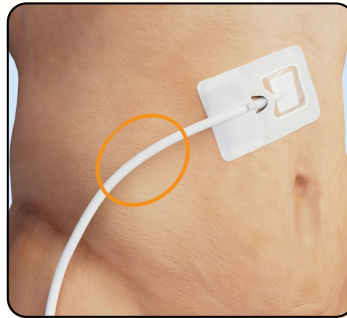
Made from “skin-friendly” hydrocolloid to protect and secure catheter in place for up to 7 days.



\*Release papers are located under the device to protect the adhesive until ready to use.

**Please Note:**

An alternative application involves switching the order of steps to secure the driveline in the grips **BEFORE** applying CathGrip® to the skin. Be sure to measure enough slack in the driveline to make a gentle curve so it's not pulled too tight when applied to the skin.



**SELECT SECUREMENT AREA**

- Select an area horizontal to the driveline insertion site, moving outward and to the side of the abdomen.
- Choose a flat area, positioned above the belt or waistline. Avoid placing over skin folds to help prevent rubbing or irritation.
- Target an area larger than the device, about 5 x 5 inches square. Clip or trim any excess hair as needed (do not shave).



**PREP SECUREMENT AREA**

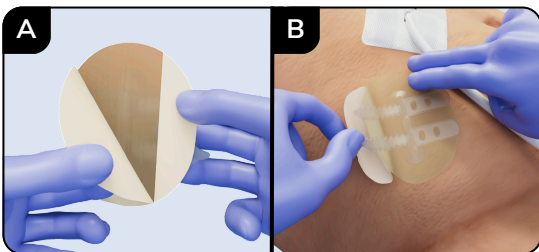


**CLEAN** skin by scrubbing with **ALCOHOL** wipe. Dry **COMPLETELY** for **15 SECONDS**.

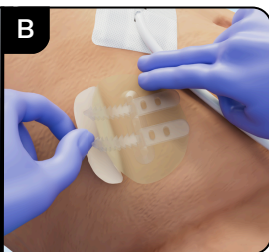
**PREP** with **BioPlus+** **BARRIER WIPE**. Dry **COMPLETELY** for **15 SECONDS**.

Allow both products to dry completely before applying CathGrip® to avoid early lifting from the skin.

### STEP 2: APPLICATION - PEEL & PRESS, THEN PLACE DRIVELINE



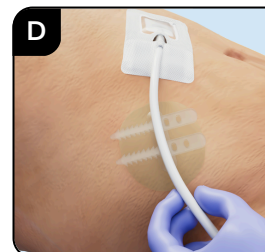
**PEEL** largest release paper first starting from the top corner downward at a 45-degree angle. Avoid touching the adhesive as much as possible.



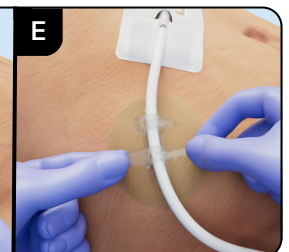
Apply device to targeted securement area and **PRESS** into place. Gently remove the 2nd smaller release paper as shown.



**PRESS** and **HOLD** the hydrocolloid oval in place at the center base and all edges for at least **15 SECONDS** to secure to skin. Do not place CathGrip® over any part of the driveline dressing.



**PLACE** driveline on the soft, no-slip grips. **ALLOW** at least 1 inch of slack in driveline to avoid tension, making a gentle curve as shown.



**PULL** soft straps tight around the driveline to secure. **LOCK** grips in place for secure hold by pulling both sides of the strap teeth fully through the opening.

# Quick Reference Guide

## CathGrip® Application and Removal for Driveline Securement

### REMOVAL



FreeDerm® is a “skin-friendly” silicone-based adhesive remover that dries quickly and does not leave any residue. As an alternative, you can also use warm water and a washcloth until the hydrocolloid turns milky white and easily lifts off the skin.

Sold separately in a box of 30 wipes (SKU: 90037).  
Also available as 1 oz. pump spray (SKU: 52200).



For removal, FreeDerm® adhesive remover is recommended. To use, wipe or spray at the **EDGE AND THEN UNDER THE ADHESIVE, GENTLY LIFTING AWAY FROM THE SKIN AS IT RELEASES**. Continue until entire adhesive pad has been removed. Never pull or force during removal.

### CathGrip® Driveline Securement Complete:

The controller should be supported by a holster or bag to minimize tension on the CathGrip® securement device.

### CONTRAINDICATIONS FOR USE

- **Absolute** (When the product should not be used at all):
  - Demonstrated sensitivity to hydrocolloid (rare)
- **Relative** (When the product can be used after healing):
  - Unhealed wound at application site (wait to heal)
  - Active rash at application site (wait to heal)
  - Active inflammation or infection (wait to heal)
- **For Use on Intact Skin**
  - If redness or irritation occurs, stop use and consult your healthcare team.
  - If any other questions or concerns arise while using CathGrip®, please consult your healthcare team.

### ROUTINE SKIN CARE

- Always leave a one-inch space around the CathGrip® device when using any cleansing products, creams, or lotions. Contact with the hydrocolloid will result in early lifting of the securement device.

### APPLICATION TIPS

- Make sure the skin is **COMPLETELY DRY** before applying CathGrip®.
- Cleansing wipes and Chlorhexidine (CHG) can cause excess moisture underneath the skin that can reduce CathGrip® wear time. Make certain that the application site for CathGrip® is as dry and moisture free as possible, before applying.
- **Wear time:** CathGrip® can be worn for up to 7 days. The first application will last shorter than subsequent applications of the product. This is due to the hydrocolloid material that absorbs underlying moisture in the skin.
- **Replace:** Change CathGrip® before 7 days anytime the hydrocolloid becomes a white color, loosens, begins to lift or becomes soiled.
- **Single-Use:** Product is not reusable and could cause product malfunction if reused. Once removed, dispose of in a trash can.
- **Storage:** Store at room temperature between 50°F and 86°F. Avoid exposure to direct sunlight.

For important product and safety information including IFU,  
please visit, [www.bravidamedical.com](http://www.bravidamedical.com)